

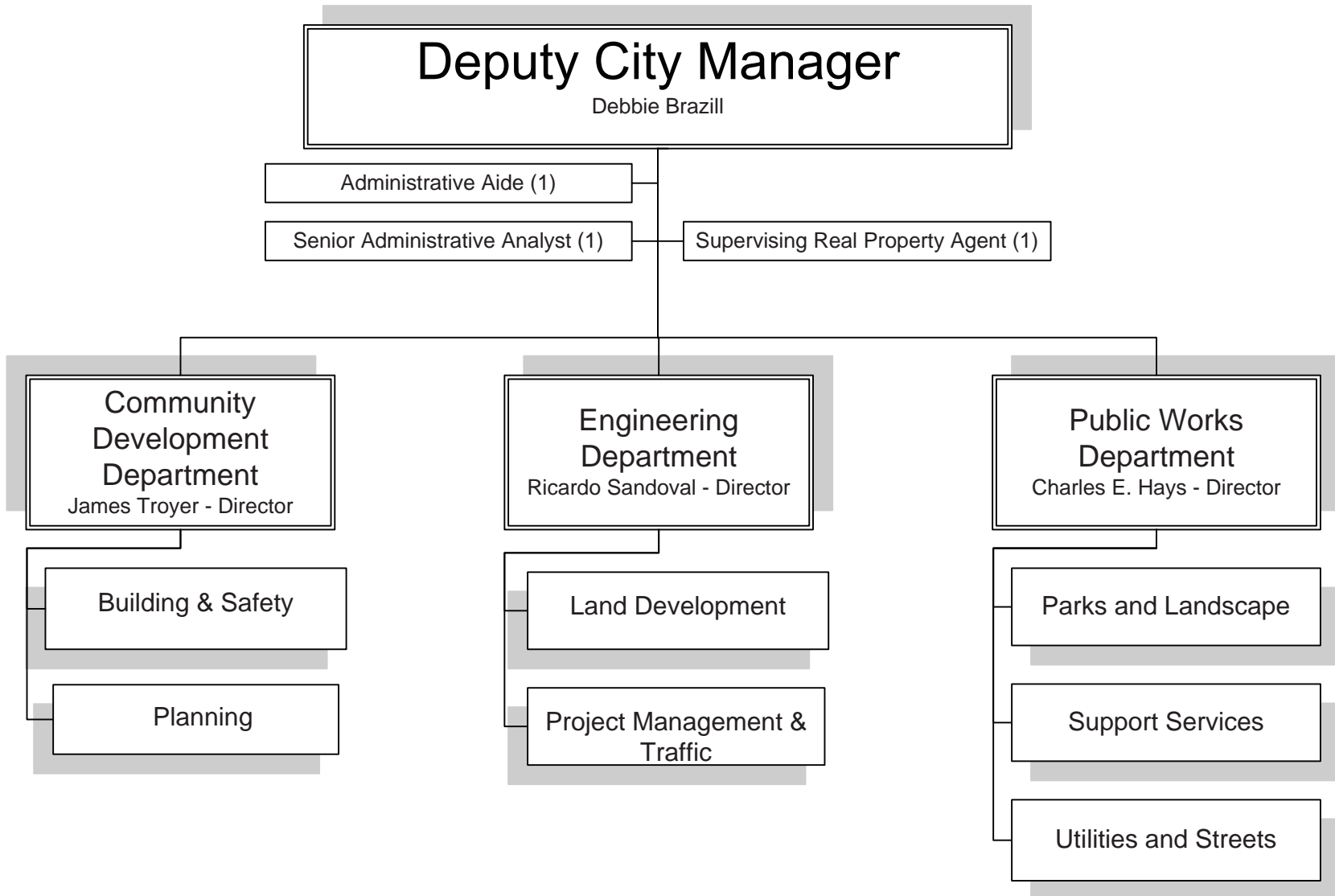
2014/2015 Organizational Chart

# Development Services Organization

Effective 7/1/2014

Budgeted 157 FTE Positions

Budgeted 11 Part-Time Positions



# Development Services Organization

Fiscal Year 2014-15

## Overview

The Development Services Organization provides the structure to manage the delivery of quality services for the growth, development and maintenance of the City's built environment. Its mission is accomplished by integrating and supporting its operating divisions and departments in the following manner:

### Focused Growth

Working toward a future Fontana that includes all of the areas within the City's sphere of influence, the Annexation Unit will continue to provide a systematic and sustainable approach to successful annexation projects processed through the Local Agency Formation Commission (LAFCO). The Annexation Unit will be augmented through a capital infrastructure program that will stimulate economic development within the annexation target areas.

The City's ambitious Capital Improvement Program requires the support of the Real Property Unit. Professionals within that group are charged with the responsibility of securing all necessary right-of-way dedications, negotiating sale and purchase agreements and providing for any required relocation assistance related to capital projects.

### Quality Development

The Development Services Organization provides professional and practical interpretation and application of the City Council's vision of Fontana's future. The Planning Division of the **Community Development Department** is the initial contact for development through the land entitlement process. From inception to completion, Planning works to ensure the highest standards for the use and design of any project submitted, while meeting the applicant's needs as well. The Building and Safety Division is the next link in the chain and provides professional plan checking, permitting, and inspections that assure adherence to those standards. The **Engineering Department** provides the professional process for development of parcel and tract maps as well as construction of the backbone infrastructure that brings those developments to fruition.

### Public Works Excellence

Charged with providing effective and efficient management of the City's valuable physical assets such as streets, parks, utilities and facilities, the **Public Works Department** includes the Divisions of Parks & Landscape, Utilities & Streets, and Support Services. Within those divisions are programs such as pavement rehabilitation, graffiti abatement, environmental protection, and parks planning and maintenance. Additionally, Public Works manages all community facilities districts and landscape maintenance districts. This professional team guarantees future generations will appreciate the many parks, playgrounds, trail systems and great facilities Fontana has to offer.

## Organization Department Summary

Organization	Department	2010/2011 Actual	2011/2012 Actual	2012/2013 Actual	2013/2014 Current	2014/2015 New Budget	% Change From Prior Year
<b>DEVELOPMENT SERVICES</b>							
	DEVELOPMENT SVCS ADMIN	1,068,270	898,135	649,894	786,946	672,750	-14.51 %
	COMMUNITY DEVELOPMENT	3,981,494	3,516,205	3,229,833	4,014,978	4,227,910	5.30 %
	ENGINEERING	17,709,643	30,171,900	30,294,557	67,221,227	10,409,930	-84.51 %
	PUBLIC WORKS	44,044,169	50,512,518	46,813,020	88,557,118	53,929,280	-39.10 %
TOTAL DEVELOPMENT SERVICES ORGANIZATION		66,803,576	85,098,757	80,987,304	160,580,269	69,239,870	-56.88 %
Total Budgeted Full-Time Personnel		167.55	158.30	157.95	157.40	157.00	-0.25 %
Total Budgeted Part-Time Personnel		11.68	9.68	9.35	13.30	11.00	20.30 %