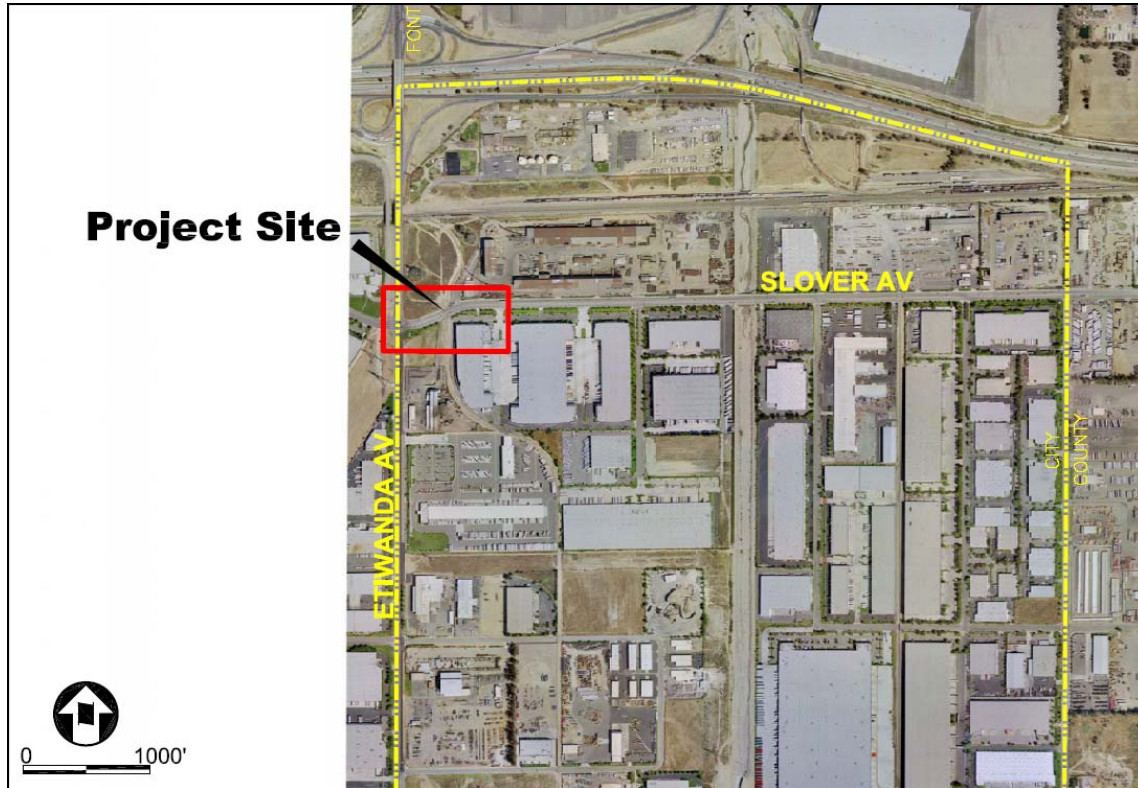


CITY OF FONTANA

Department of Engineering
Design Section
8353 Sierra Avenue
Fontana, California 92335

Slover - Etiwanda to 800' Easterly



Project Location Map

PROJECT DESCRIPTION:

A separate City project will widen Slover Avenue from the intersection of Slover and Etiwanda to the rail tracks 800 feet to the east. Project include widening on the south side of Slover.

TOTAL COST: \$1,000,000

START OF CONSTRUCTION: June 2009

PROJECT COMPLETION: December 2009

PROJECT STATUS: Design