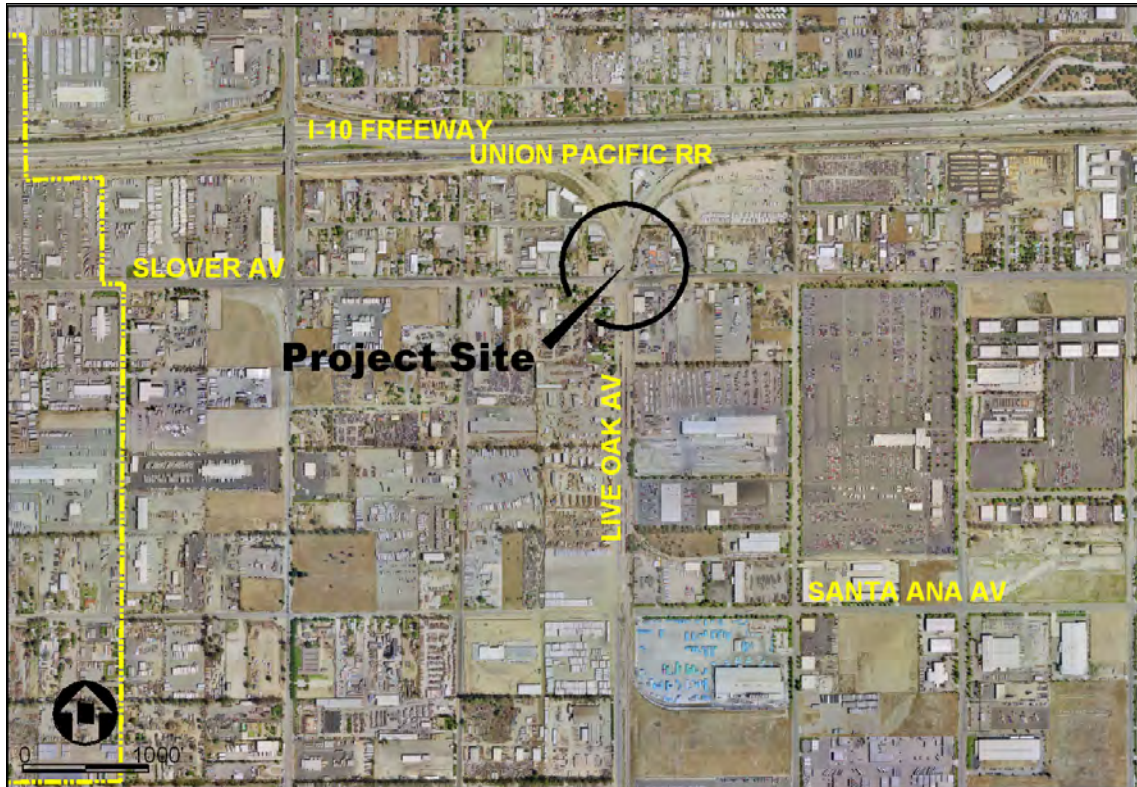


# CITY OF FONTANA

Department of Engineering  
Design Section  
8353 Sierra Avenue  
Fontana, California 92335

---

## Slover / Live Oak RR Crossing (County)



**Project Location Map**

### **PROJECT DESCRIPTION:**

This project will widen the street for 800' and install a new rail signal, gate, and crossing the on the track east Live Oak Avenue. This project will be constructed by the County with City and UPRR participation.

**TOTAL COST:** \$852,896

**START OF CONSTRUCTION:** June 2007

**PROJECT COMPLETION:** October 2007

**PROJECT STATUS:** Under Design / ROW