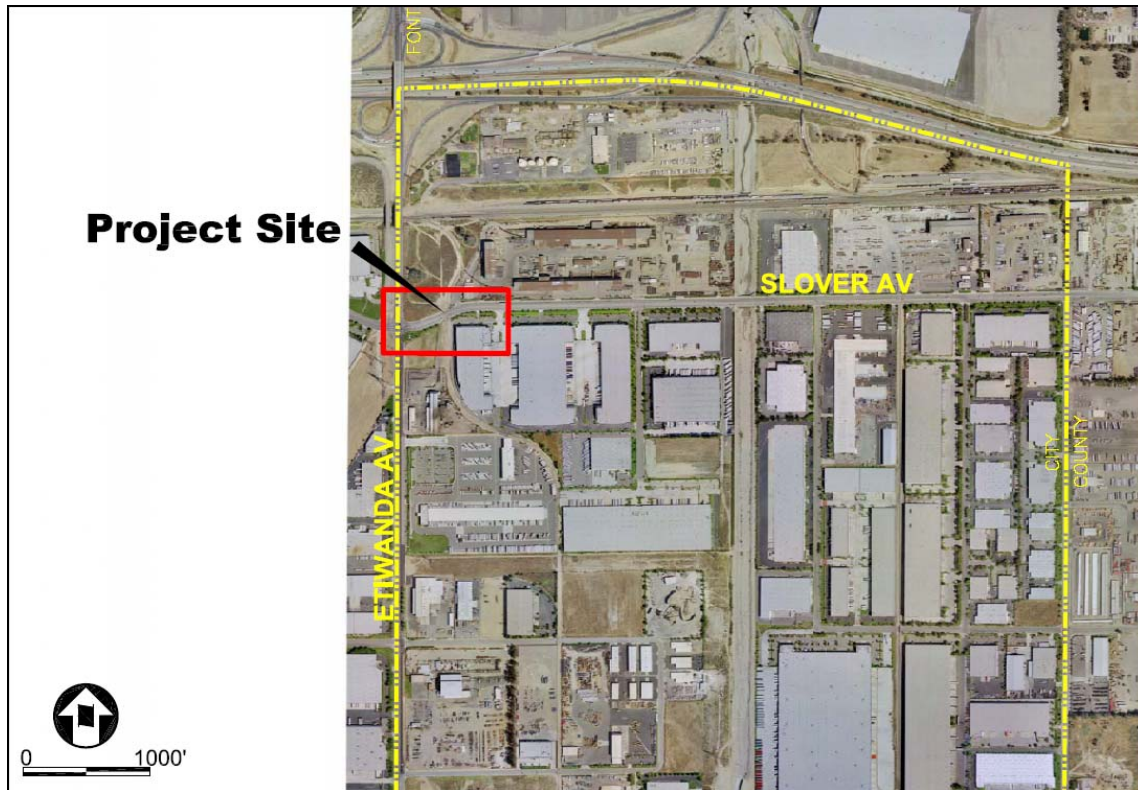


# CITY OF FONTANA

Department of Engineering  
Design Section  
8353 Sierra Avenue  
Fontana, California 92335

---

## Slover - Etiwanda to 800' Easterly



**Project Location Map**

### **PROJECT DESCRIPTION:**

A separate City project will widen Slover Avenue from the intersection of Slover and Etiwanda to the rail tracks 800 feet to the east. Project include widening on the south side of Slover.

**TOTAL COST:** \$1,000,000

**START OF CONSTRUCTION:** June 2008

**PROJECT COMPLETION:** September 2008

**PROJECT STATUS:** Design