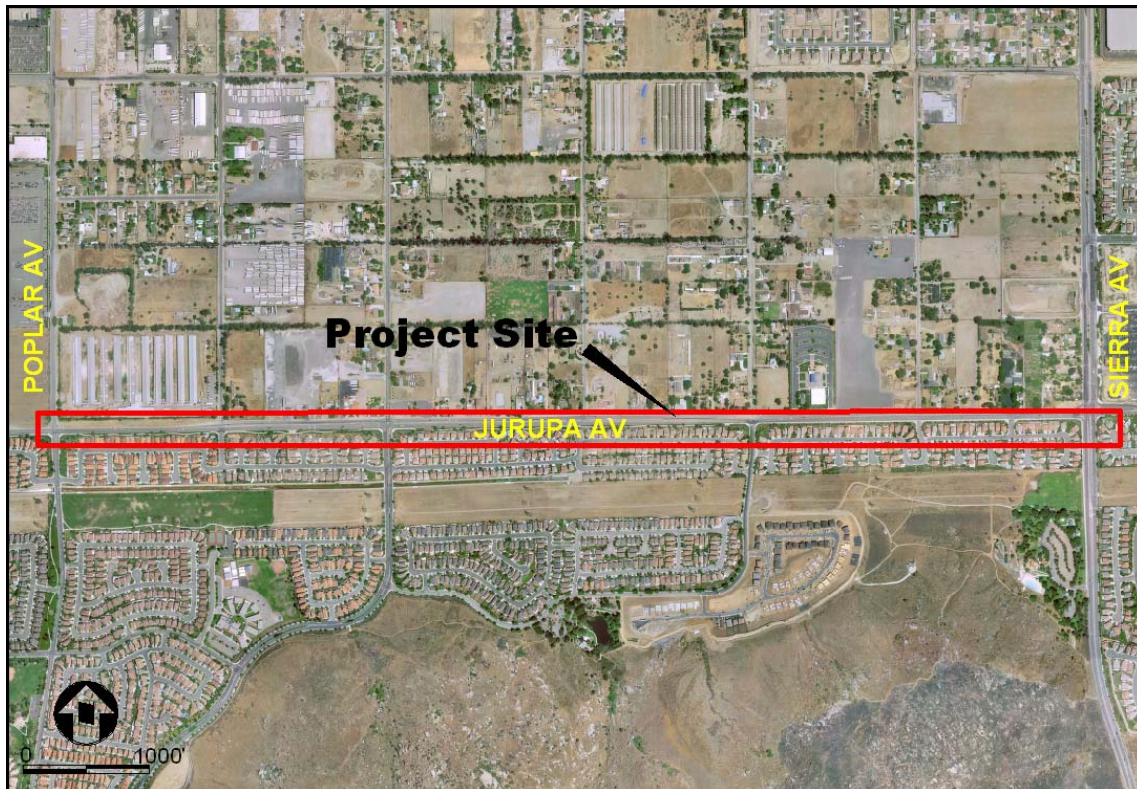


CITY OF FONTANA

Department of Engineering
Design Section
8353 Sierra Avenue
Fontana, California 92335

Jurupa Ph 1 - Poplar to Sierra



Project Location Map

PROJECT DESCRIPTION:

Widen the Jurupa Ave. to from 60' to 104' (Primary Highway) and install storm drain, sewer, a raised landscaped median, curb, gutter, sidewalk, decorative lighting and decorative traffic signals between Poplar to Sierra.

TOTAL COST: \$13,260,000

START OF CONSTRUCTION: July 2008

PROJECT COMPLETION: September 2009

PROJECT STATUS: Construction