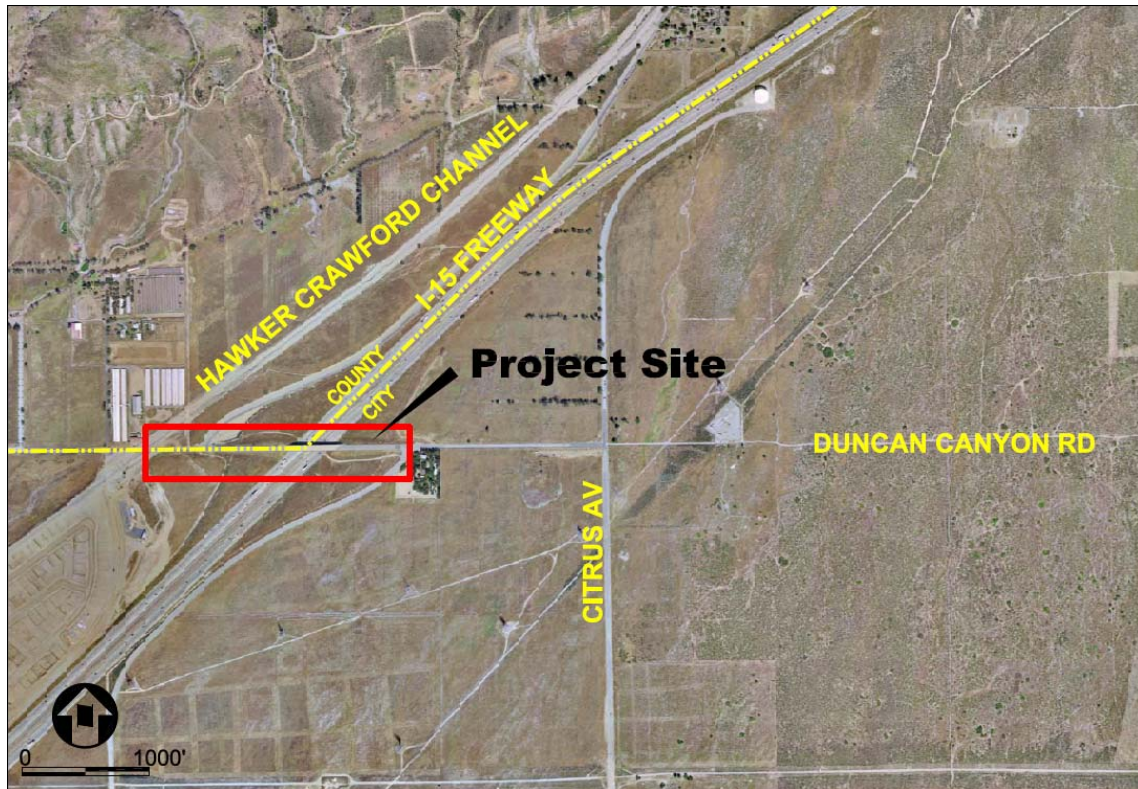


# CITY OF FONTANA

Department of Engineering  
Design Section  
8353 Sierra Avenue  
Fontana, California 92335

---

## Duncan Canyon RCB Ph1 Line A - HC Ch to E. I-15



**Project Location Map**

### **PROJECT DESCRIPTION:**

This project is to design the ultimate storm drain box which is called Line A in the Master Storm Drain Study. This Line will crossing I-15 Fwy going in Duncan Canyon Road to be constructed before/with the Duncan Canyon Interchange Project. This project is for phase 1 from Hawker Crawford Channel to East of I-15 fwy.

**TOTAL COST:** \$10,400,000

**START OF CONSTRUCTION:** December 2008

**PROJECT COMPLETION:** September 2009

**PROJECT STATUS:** Design